

# MONTHLY MEMBERSHIP PROGRESS REPORT

District 2 T1

Results as of: 2/29/2024

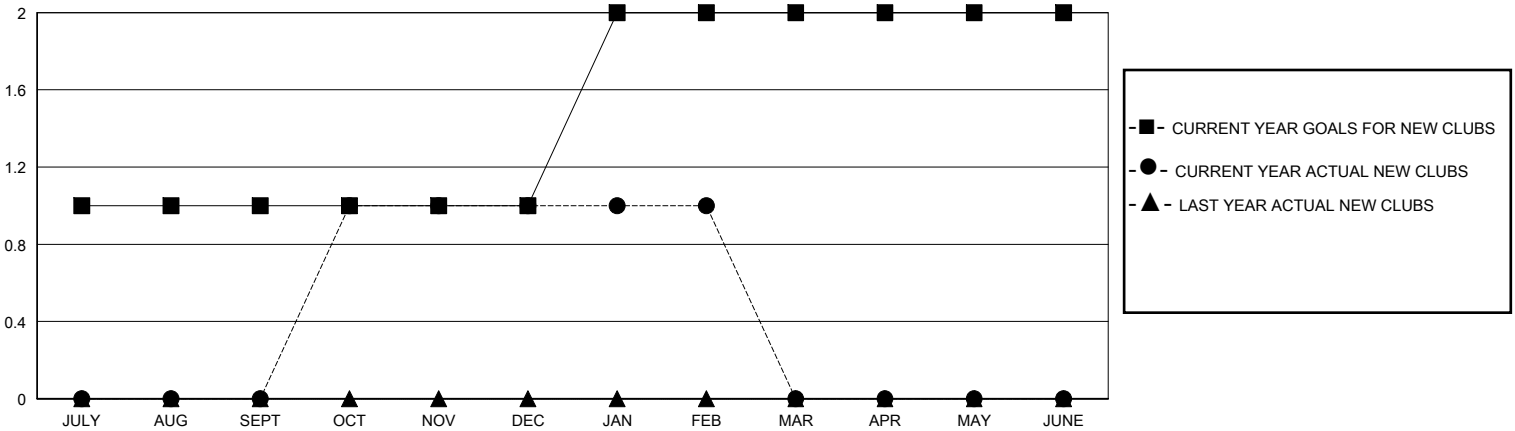
GMT:

LOCATION TEXAS

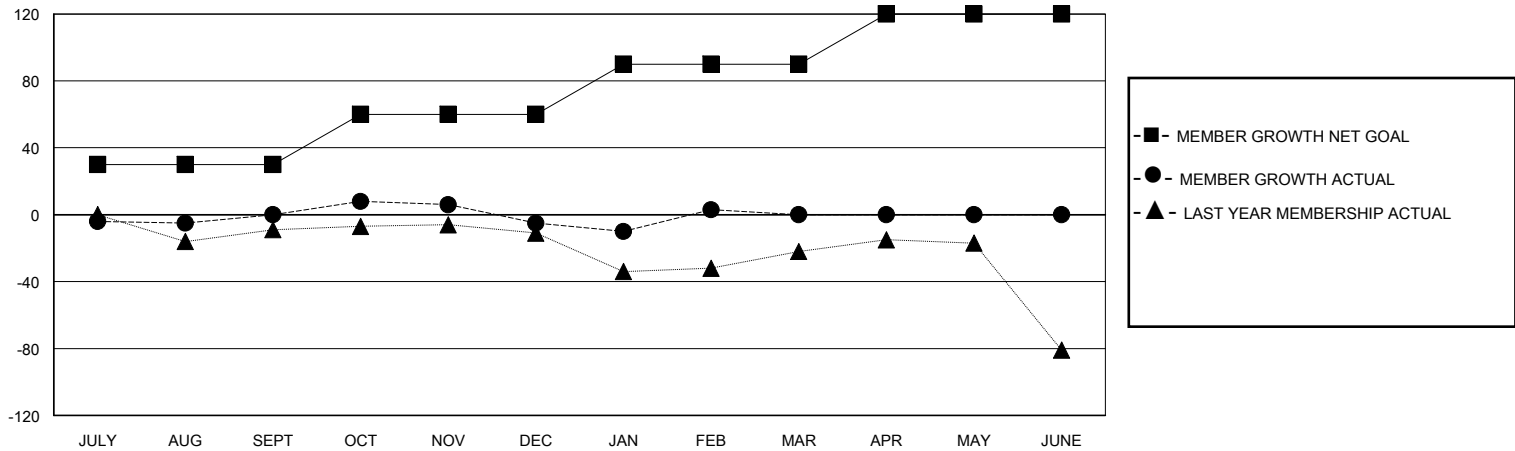
GMT CA

Clubs				Members			
RESULTS FOR 2023-2024				RESULTS FOR 2023-2024			
QUARTER	NEW CLUB GOAL	NEW CLUBS	DROPPED CLUBS	QUARTER	MEMBER GROWTH NET GOAL	MEMBER GROWTH ACTUAL	DROPPED MEMBERS ACTUAL (including transfers)
JULY/AUG/SEPT	1	0	0	JULY/AUG/SEPT	30	52	48
OCT/NOV/DEC	0	1	0	OCT/NOV/DEC	30	57	61
JAN/FEB/MAR	1	0	0	JAN/FEB/MAR	30	27	16
APR/MAY/JUNE	0	0	0	APR/MAY/JUNE	30	0	0

GOALS AND ACTUAL NEW CLUBS CUMULATIVE



GOALS AND ACTUAL MEMBERS CUMULATIVE



DROPPED CLUBS: 0	17 CLUBS OF 36 ADDED 1 OR MORE NEW MEMBERS	<b>GENDER DISTRIBUTION</b> MALE 749 (60.21%) FEMALE 495 (39.79%)
<b>DROPPED MEMBERS</b> DECEASED 9 CLUB CANCELLED 0 OTHER 116 TOTAL 125	<a href="#">CLICK HERE FOR CUMULATIVE MEMBERSHIP DATA</a>	TOTAL FAMILY UNIT MEMBERS 144 FAMILY MEMBERS PAYING HALF DUES 73